

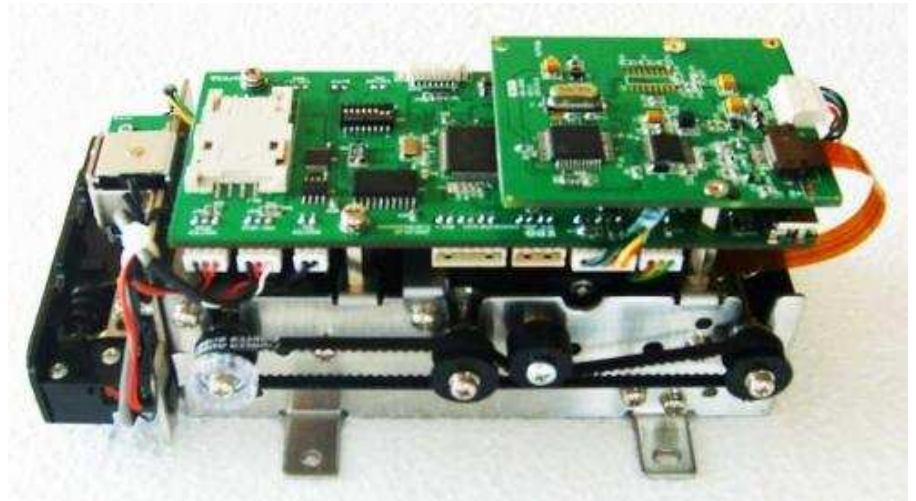
Motorized Card Encoder ES1-5XYZ Series

Overview:

ES1-5XYZ series are compact sized motorized insertion type card readers providing high reliability in a space saving device. The mechanism offers accurate and efficient card encoding for hotel keycard issuing, kiosks, payment systems, parking systems, POS, etc.

Features:

- ❖ Magnetic Stripe Card Reader
- ❖ IC Contact Card Reader & Writer
- ❖ Compatible with T=0, T=1
- ❖ Electronic Shutter
- ❖ EMV Level 1
- ❖ RS-232C, USB-CDC Interface
- ❖ Write LoCo, HiCo
- ❖ Anti-Skimming



Technical Specifications:

	Specification	Remarks
Card Standard	ISO-7810 ISO / 1EC7816-3:1997	ISO-1, 2 & 3 tracks
Communication	RS-232 or USB-CDC	
Power	24VDC	
Life-Time	Mag Head: 2,000,000 cycles IC Contact: 700,000 contacts	
Environment	Operating: -10°C ~ 70°C / 0 ~ 90% RH Storage: -20°C ~ 80°C / 0 ~ 90% RH	Non-Condensing
Dimensions	139 x 79 x 48 mm	